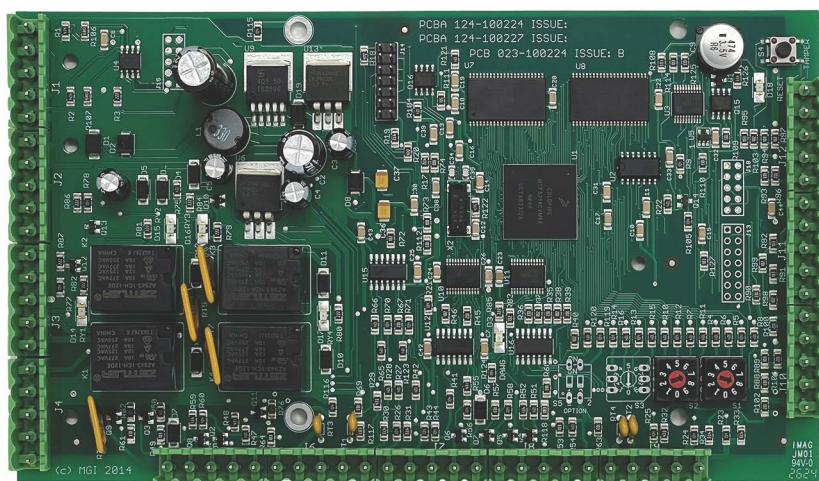


# ENHANCED RELAY CONTROL DEVICE (ERCD)

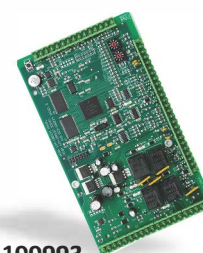


## APPLICATION

- ❑ The ERCD (Enhanced Relay Control Device) expands the control capabilities of Millennium. The ERCD is an add-on board that can control up to 8 additional programmable relays, for any product that requires voltage switching. It operates and logs history transactions into the memory buffer even if communications with the ESCU (Enhanced Site Control Unit) have been interrupted.

## FEATURES

- ❑ Each ERCD has 4 individually isolated single pole, Form C relay outputs, which can be programmed for activation by a variety of triggering sources.
- ❑ Communicates using various types of supervised wiring methods including; Daisy-Chaining, T-Tapping, Home Running, Star Configuration, and High Security Loop Back.
- ❑ Up to 10 RC D's can be connected to a single ESCU (Enhanced Site Control Unit) with a maximum architecture of 80,000 relays per system.



ERCD



149-100993

Relay control device. Expands available relays able to be linked to EDCC alarm inputs via software.



Enclosure

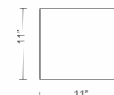


060-101025

Millennium Back Box package enclosure - with screw mounted cover.



Enclosure



041-100992

1 Board Surface Enclosure - Enclosure suitable for 1 Millennium circuit board, with camlock.

## SPECIFICATIONS

### Power Requirements

- 9-14 VDC, from our standard Power Supply . Current consumption is 150mA nominal, and 380 mA maximum.

### Circuit Protection

- Input power is protected from reverse polarity, over voltage, and transient surges.

### ERCD Device Communications

- A twisted pair, RS-485 polling scheme is used to communicate with other Millennium Devices.

### Programmable Relays

- Each ERCD employs 4 programmable Single pole, Form C relays that are rated for 2 amps at 24 VDC.

### All Events History Buffer

- 2000 all events history, stored in RAM memory with a minimum of 24 hours backup.

### Priority Event Buffer

- 100 software selectable priority events (alarms, com fail, etc.).
- These events are stored on-board if the ERCD is off-line with the host computer. Stored events are sent to the host computer once communications are re-established.

### Operating Temperature

- 14° to 104°F (-10° to 40°C) less than 90% non-condensing humidity.

### Cover Tamper

- On-board integrated tamper switch.

### Dimensions

- 4.24" x 7.35" @ < 1lb
- 10.4 x 18.7cm @ < 0.45Kg

### Approvals and Listing

- UL 294